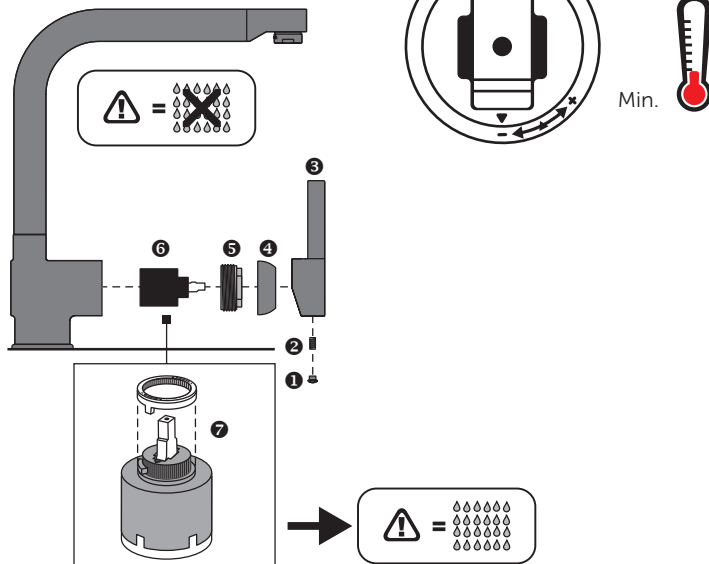


Scalding protection

SETTING THE SCALDING PROTECTION

- Cut off the water supply.
- Remove the hot/cold badge 1.
- Undo the screw 2 in the lever 3 using an Allen wrench.
- Pull off the lever 3.
- Remove the attachment ring 4.
- Undo the cartridge ring 5 using a wrench.
- Remove the cartridge 6.
- Remove the scalding protection ring 7 and insert it according to the diagram on the right.
- Subsequently put the individual parts together again.



WASSERWERK

MADE IN GERMANY